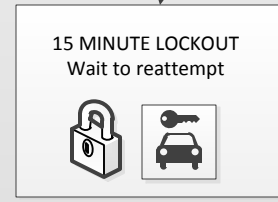
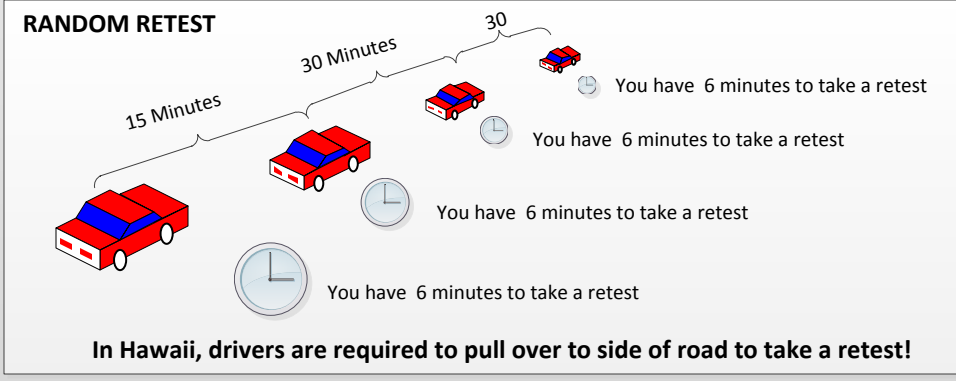
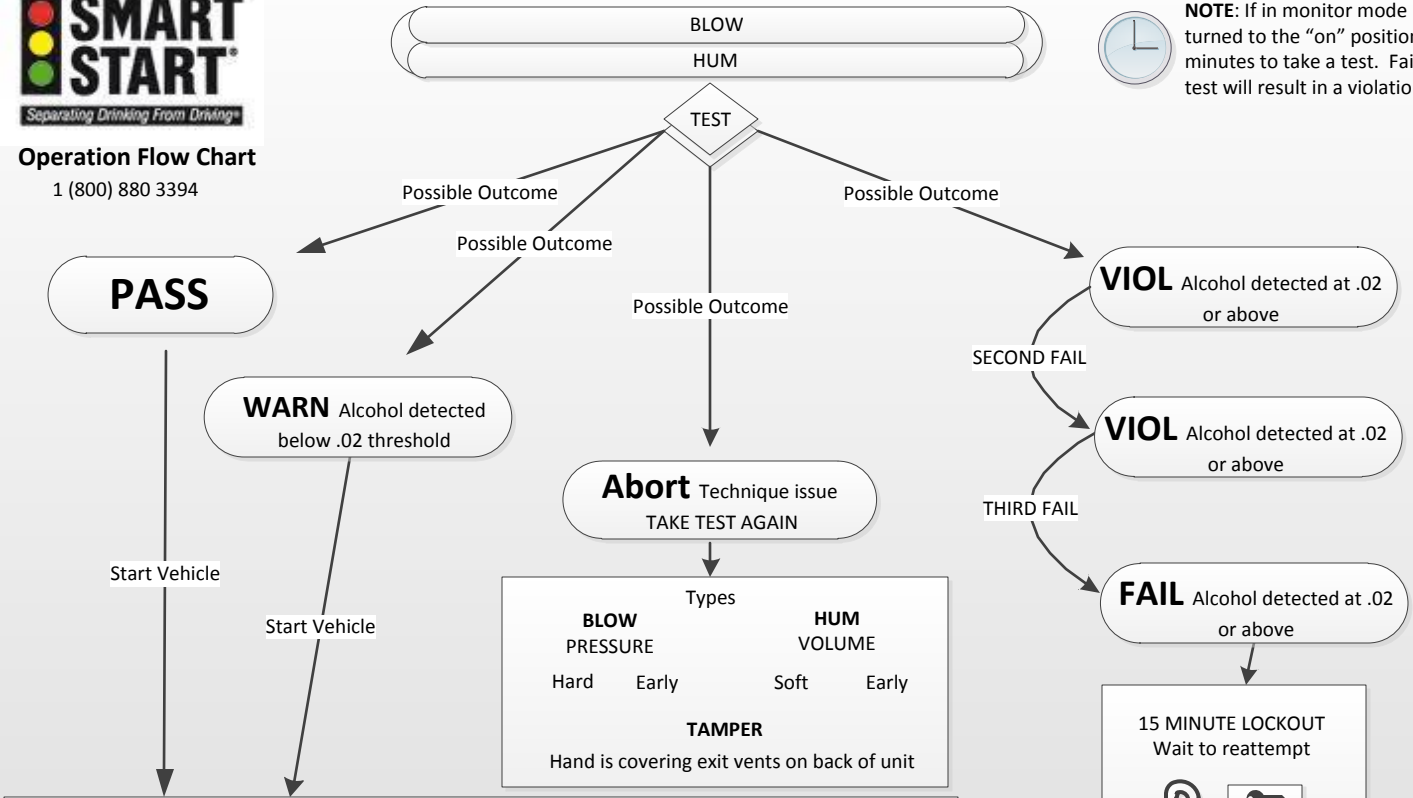




**Operation Flow Chart**  
1 (800) 880 3394



**NOTE:** If in monitor mode 1, once key is turned to the "on" position you have 4 minutes to take a test. Failure to take a test will result in a violation



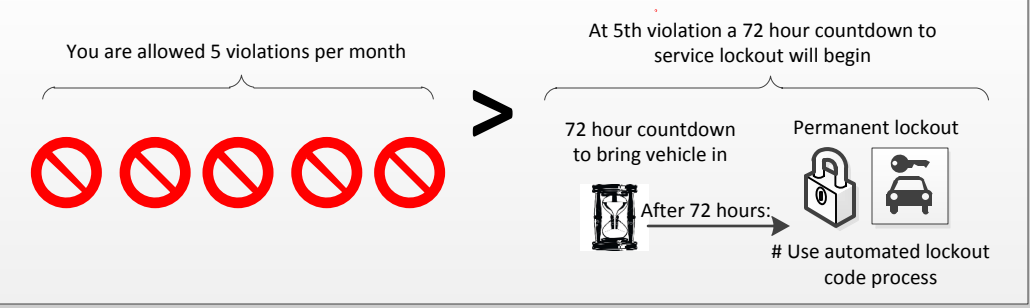
**\* Automated lockout code process:**

- 1.) Press # and 0 (wait for prompt)
- 2.) Enter code 00360430
- 3.) Press #

*A final 6 hour time window will be given to reach service center, then vehicle will lock out permanently and require a tow in.*

or call 1 (800) 880 3394

**VIOLATIONS SCHEDULE:**



- VIOLATIONS:**
- = 20 aborts in a row
  - = .02 Br.A.C. or above
  - = Skip a retest
  - = Tamper with device
- Press # 3 to show the violations you have

**SERVICE SCHEDULE:**

